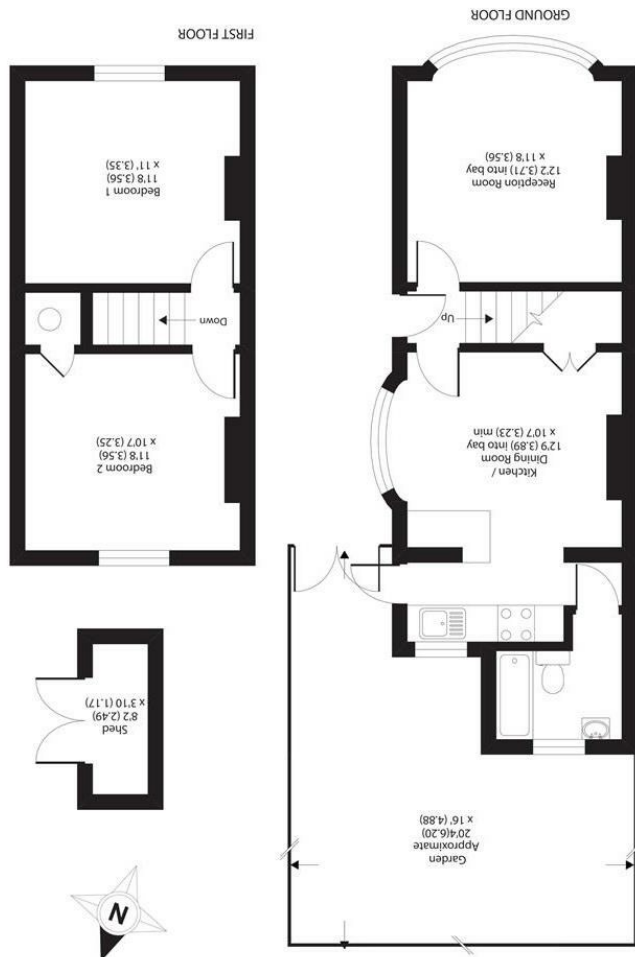
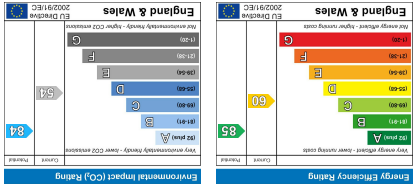


All appliances listed in these details are only 'as seen' and have not been tested by Gibson Lane, nor have we sought certification of warranty or service, unless otherwise stated. Measurements, areas and distances are approximate. Floor plans and photographs are for guidance purposes only and must not be relied upon for any purpose. These details are offered on the understanding that all negotiations are made through this company. Neither these particulars, nor verbal representations, form part of any offer or contract, and their accuracy cannot be guaranteed.



APPROX. GROSS INTERNAL FLOOR AREA 708 SQ FT 65.7 SQ METRES
 (EXCLUDES OUTBUILDING)

34 Richmond Road
 Kingston upon Thames
 Surrey
 KT2 5ED
 www.gibsonlane.co.uk
 Tel: 020 8546 5444



Kings Road

Kingston Upon Thames KT2 5JH



Kings Road
 Kingston Upon Thames KT2 5JH
£550,000

A pretty two double bedroom character cottage with courtyard garden in a prime residential location.

Description

A beautifully presented two bedroom semi detached cottage in a prime residential area of North Kingston, within a short distance of Richmond Park and in the catchment for outstanding rated schools. On the ground floor, there is a front reception room with bay window, and at the rear is a further reception room leading onto a kitchen that overlooks the pretty courtyard garden, and a modern bathroom. Upstairs there are two genuine double bedrooms and plenty of built in wardrobes. The property is presented in good decorative order throughout with plenty of character features including original fireplaces. There is potential to extend, subject to the usual planning consents.

Situation

Kings Road is situated in this premier North Kingston location between Richmond Park, Canbury Gardens and the River Thames. The property is convenient for Kingston station giving direct access into Waterloo and the A3 which serves both London & M25. Kingston town centre with its array of shops and restaurants is a short distance away. The standard of schooling in the immediate area is excellent within both the private & state sectors, these include Latchmere, Fern Hill, the German School and Tiffin boys & girls, the area also has an extensive range of leisure facilities.

Tenure: Freehold
Local Authority: Kingston upon Thames

